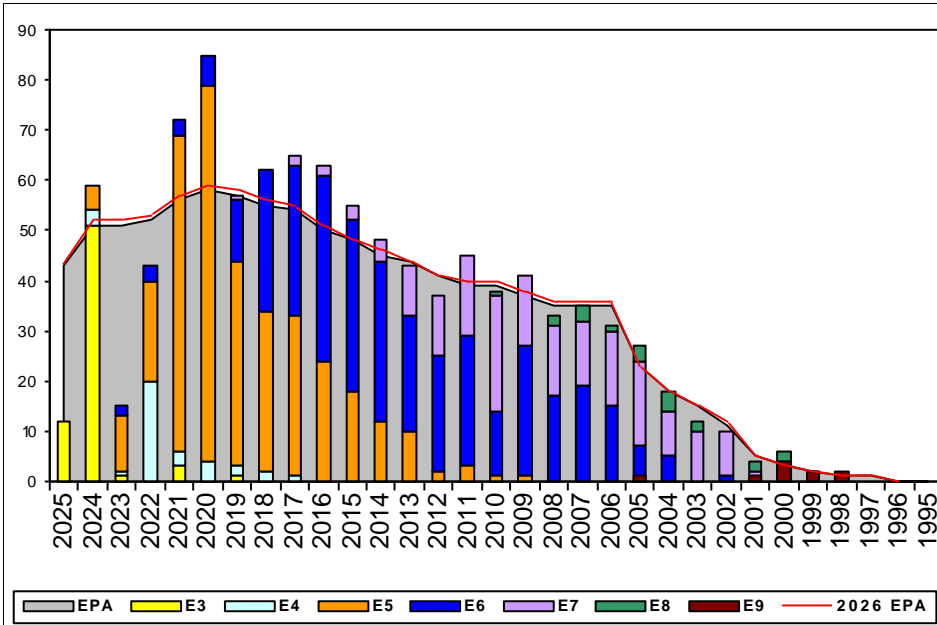


# Yeoman, TAR - L530

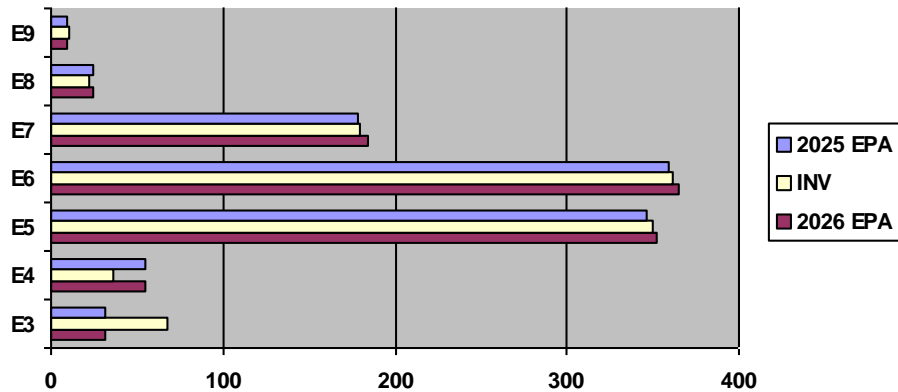


| Sea Shore Rotation |     |       | FS MANNING |         | ADV OPP. |        |          |
|--------------------|-----|-------|------------|---------|----------|--------|----------|
| TOUR               | SEA | SHORE | PG         | SEA     | SHORE    | YNTAR  | All-Navy |
| E1-3               | 48  | 42    | E1-3       | 216.67% | 500.00%  | TIR    | TIR      |
| E4                 | 48  | 42    | E4         | 37.50%  | 73.68%   | 40.00% | TIR      |
| E5                 | 48  | 42    | E5         | 123.64% | 95.22%   | 36.00% | 26.10%   |
| E6                 | 48  | 42    | E6         | 117.78% | 102.05%  | 5.00%  | 9.6%     |
| E7                 | 48  | 36    | E7         | 134.62% | 95.33%   | 23.57% | 22.94%   |
| E8                 | 48  | 36    | E8         | 50.00%  | 95.24%   | 7.29%  | 12.83%   |
| E9                 | 42  | 36    | E9         | 0.00%   | 111.11%  | 33.33% | 29.87%   |

## Zone Information

|                      | ZONE A | ZONE B | ZONE C | ZONE D  | ZONE E | ALL ZONES |
|----------------------|--------|--------|--------|---------|--------|-----------|
| <b>FY25 Manning</b>  | 100%   | 116%   | 98%    | 102%    | 85%    | 102%      |
| <b>FYTD RE Rate:</b> | 82.86% | 93.55% | 84.62% | 100.00% | 32.00% | 78.36%    |
| <b>FY26 Manning</b>  | 98%    | 114%   | 97%    | 100%    | 84%    | 101%      |

EPA by Paygrade vs Inventory



## NOTES

The YN TAR rating is HEALTHY at 102% for FY25 Enlisted Program Authorization!

To avoid any impact on your detailing window, please remember to submit special program requests 13-18 months prior to your PRD.

If you are considering early retirement (before PRD or SEAOS), please ensure you communicate your intent prior to submitting via NSIPS.

For any questions regarding community health, please contact ECM YNC(SW/EXW) Jennifer Stires at [jennifer.l.stires.mil@us.navy.mil](mailto:jennifer.l.stires.mil@us.navy.mil)

|                          | E1-3 | E4  | E5   | E6   | E7   | E8  | E9   | TOTAL |
|--------------------------|------|-----|------|------|------|-----|------|-------|
| <b>% INV to FY25 EPA</b> | 219% | 65% | 101% | 101% | 101% | 88% | 111% | 102%  |
| <b>EPA (FY25)</b>        | 31   | 55  | 346  | 359  | 179  | 25  | 9    | 1004  |
| <b>INVENTORY</b>         | 68   | 36  | 350  | 362  | 180  | 22  | 10   | 1028  |
| <b>EPA (FY26)</b>        | 31   | 55  | 352  | 365  | 184  | 25  | 9    | 1021  |
| <b>% INV to FY26 EPA</b> | 219% | 65% | 101% | 101% | 101% | 88% | 111% | 101%  |

